

QUICK REFERENCE GUIDE

APOLLO® 604

Version 2.0

Revision 4

OCTOBER 1989

II MORROW, INC.
2345 Turner Road, S.E.
Salem, Oregon 97302

561-0061B

GRI SELECTION

- 1) PRESS **MODE** TO REACH SETUP MODE.
- 2) PRESS **SEL**. TURN **DATA** TO PROPER GRI.
- 3) PRESS **ENT**.

FLYING A DIRECT COURSE FROM YOUR PRESENT POSITION

- 1) PRESS **MODE** TO REACH WPT MODE.
- 2) TURN **DATA** TO DESIRED REGION.
- 3) TURN **LIST** TO DESIRED DESTINATION WPT.
- 4) PRESS **TO**.
- 5) PRESS **MODE** TO REACH POS MODE.
- 6) PRESS **FROM**.

FLYING TO OR FROM A WPT

- 1) PRESS **MODE** TO REACH WPT MODE.
- 2) TURN **DATA** TO DESIRED REGION, PRESS **SEL**.
- 3) TURN **DATA** TO SELECT DESIRED CHARACTER THEN PRESS **ENT**
- 4) CONTINUE FOR EACH CHARACTER
- 5) PRESS **TO** OR **FROM**

WAYPOINT ENTRY

- 1) PRESS **MODE** TO REACH WPT MODE
- 2) TURN **DATA** TO USER REGION
- 3) TURN **LIST** TO "NEW WPT!"

- 4) PRESS **SEL** AND THEN **ENT** TO ENTER PRESENT POSITION (PP) COORDINATES
- 5) TURN **DATA** FOR 1st WPT NAME CHARACTER AND THEN PRESS **ENT**
- 6) REPEAT FOR REMAINING CHARACTERS
- 7) PRESS **SEL** TO SKIP "PHANTOM WPT?" THEN TURN **DATA** FOR CORRECT HEMISPHERE AND PRESS **ENT**
- 8) TURN **DATA** FOR CORRECT LATITUDE DEGREES AND THEN PRESS **ENT**. REPEAT FOR MIN. AND HUNDREDTHS OF MIN.
- 9) REPEAT STEPS 7 AND 8 FOR LONGITUDE

NAVIGATION DATA

- 1) PRESS **MODE** TO REACH NAV
- 2) TURN **LIST** TO VIEW NAV INFO

POSITION COORDINATES

- 1) PRESS **MODE** TO REACH POS MODE

STORE PRESENT POSITION

- 1) PRESS **MODE** TO REACH POS MODE
- 2) PRESS **FROM** (THIS WILL REPLACE THE PREVIOUS "FROM" (DEPARTURE) WPT FOR NAV DATA. THE COORDINATES ARE STORED IN THE "PPFR" WAYPOINT IN THE USER WAYPOINT REGION OF WPT MODE

SPECIAL USE AIRSPACE WARNING

- 1) PRESS **MODE** TO REACH POS MODE THEN TURN **LIST** KNOB TO VIEW AIRSPACE AREA, BEARING AND RANGE.
- 2) FROM THE AIRSPACE AREA DISPLAY, TURN **DATA** TO VIEW DISPLAYS OF: IN/OUT, AIRSPACE NAME, FLOOR AND CEILING, ATC FREQUENCIES, CONTROLLING AGENCY AND ACK AREA?.
- 3) PRESS **ENT** WHILE ON "ACK AREA?" DISPLAY PAGE, TO DISABLE ALERT (FLASHING **WARN** & **POS** ANNUNCIATORS).

SPECIAL USE AIRSPACE WARNING SETUP

- 1) PRESS **MODE** TO REACH SETUP MODE.
- 2) TURN **LIST** TO REACH AIRSPACE SETUP.
- 3) PRESS **ENT** TO REACH ON/OFF DISPLAY.
- 4) PRESS **SEL** TO ENABLE CHOICE, TURN **DATA**, TO ON/OFF, AND PRESS **ENT**.
- 5) TURN **LIST** TO REACH WARNING DISTANCE.
 - a) PRESS **SEL** TO ENABLE DISTANCE SELECTION.
 - b) TURN **DATA** TO WARNING DISTANCE (0-99nm).
 - c) PRESS **ENT**.

AUTOMATIC WAYPOINT REFERENCE (AUTO-TRACK)

- 1) PRESS **MODE** TO REACH POS MODE.
- 2) TURN **LIST** TO VIEW FLYBRARY® AIRPORTS.
- 3) TURN **DATA** TO SELECT FLYBRARY® AIRPORTS, VORs, OR USER WAYPOINTS.
- 4) TURN **LIST** TO VIEW NEAREST FIVE ITEMS.

INFO FOR REFERENCE WAYPOINT

- 1) PRESS **MODE** TO REACH POS MODE.
- 2) TURN **LIST** CW TO REACH NEAREST WAYPOINT FUNCTION.
- 3) TURN **DATA** TO SELECT FLYBRARY® AIRPORTS, VORs, OR USER WAYPOINTS.
- 4) TURN **LIST** TO VIEW DESIRED ITEM.
- 5) PRESS **SEL** AND THEN **ENT** TO REACH INFO MODE.
- 6) TURN **DATA** TO VIEW INFO

INFO FOR YOUR DESTINATION

- 1) PRESS **MODE** TO REACH INFO MODE.
- 2) TURN **DATA** TO VIEW WAYPOINT INFO.

LOOKING FOR AN ITEM IN INFO MODE

- 1) PRESS **MODE** TO REACH INFO MODE (CITY, IDENTIFIER, OR AIRPORT NAME).
- 2) PRESS **SEL**.
- 3) TURN **DATA** TO CHOOSE THE 1st CHARACTER OF THE ITEM AND THEN PRESS **ENT**.
- 4) REPEAT STEP 3 FOR REQUIRED NAME.
- 5) SELECT A SPACE WITH **DATA** AFTER THE NAME AND THEN PRESS **ENT**.
- 6) AFTER THE ITEM IS FOUND YOU MAY:
 - a) TURN **DATA** TO VIEW INFO.
 - b) PRESS **DEL** OR **ENT** TO VIEW ITEMS WITH THE SAME CHARACTERS.
 - c) TURN **LIST** TO VIEW WAYPOINTS IN THE SAME REGION.

SETTING A FLIGHT PLAN

- 1) **PRESS MODE** TO REACH TRIP MODE.
RETRIEVE A WAYPOINT
- 2) TURN **LIST** TO "RETRIEVE WPT."
- 3) **PRESS SEL**.
- 4) TURN **DATA** TO SELECT 1st CHARACTER OF WAYPOINT ID AND THEN **PRESS ENT**.
- 5) REPEAT STEP 4 AS REQUIRED THEN **PRESS ENT**.
INSERT TRIP LEG WAYPOINT
- 6) TURN **LIST** TO TRIP LEG DISPLAY.
- 7) TURN **DATA** TO DESIRED POSITION IN YOUR FLIGHT PLAN.
- 8) **PRESS ENT** TO PLACE RETRIEVED WAYPOINT IN FRONT OF DISPLAYED TRIP LEG NUMBER.
- 9) CONTINUE FOR DESIRED WAYPOINTS.

TRIP STATUS

- 1) **PRESS MODE** TO REACH TRIP MODE.
- 2) TURN **LIST** TO REACH TRIP STATUS. **PRESS**.
- 3) TURN **DATA** TO REACH TRIP STATUS TYPE DESIRED (ACTIVATE, SUSPEND, REVERSE, OR CANCEL).
- 4) **PRESS ENT**.

DEAD RECKONING SETUP

- 1) **PRESS MODE** TO REACH SETUP MODE.
- 2) TURN **LIST** TO DISPLAY DR MODE SETUP, THEN **PRESS ENT** TO ACTIVATE ENTRY.
- 3) ENTER COURSE.
 - a) **PRESS SEL**.
 - b) TURN **DATA** TO DISPLAY YOUR COURSE.
 - c) **PRESS ENT**.
 - d) REPEAT AS NEEDED.

4) ENTER SPEED.

- a) TURN **LIST** CW TO DISPLAY SPEED.
- b) **PRESS SEL**.
- c) TURN **DATA** TO DISPLAY YOUR SPEED.
- d) **PRESS ENT**.
- e) REPEAT AS NEEDED.

5) ENTER STARTING POSITION.

- a) TURN **LIST** TO DISPLAY DR START POSITION.
- b) **PRESS SEL** TO DISPLAY "RETRIEVE WPT", "ENTER PP?", "PHANTOM WPT?", EDIT LAT, OR EDIT LON.

PRESS SEL TO CHOOSE

- c) RETRIEVE WPT - **PRESS SEL**, TURN **DATA**, AND **PRESS ENT** FOR EACH CHARACTER.

OR

- d) TO ENTER PP - **PRESS ENT** AT "ENTER PP" DISPLAY.

OR

- e) ENTER PHANTOM WPT - **PRESS ENT** AND FOLLOW PROMPTS.

OR

- f) EDIT LATITUDE - **PRESS SEL**, TURN **DATA**, & **PRESS ENT** FOR EACH CHARACTER.

and

EDIT LONGITUDE - **PRESS SEL**, TURN **DATA**, & **PRESS ENT** FOR EACH CHARACTER.

6) DR MODE ON/OFF.

- a) TURN **LIST** CW TO DISPLAY ON/OFF.
- b) **PRESS SEL**.
- c) TURN **DATA** TO DESIRED CHOICE.
- d) **PRESS ENT**.
- e) **PRESS DEL** TO EXIT.

E-6B INTERNAL FLIGHT COMPUTER

TRUE AIRSPEED

- 1) PRESS **MODE** TO REACH SETUP MODE.
- 2) TURN **LIST** TO DISPLAY E-6B FEATURE.
- 3) PRESS **ENT** TO REACH E-6B FEATURES.
- 4) PRESS **ENT** TO COMPUTE TAS.
- 5) ENTER INDICATED AIRSPEED (IAS).
 - a) PRESS **SEL**
 - b) TURN **DATA** TO DISPLAY IAS.
 - c) PRESS **ENT**
- 6) ENTER PRESSURE ALTITUDE (PALT).
 - a) TURN **LIST** CW TO REACH PALT DISPLAY.
 - b) PRESS **SEL**.
 - c) TURN **DATA** TO DISPLAY YOUR PALT.
 - d) PRESS **ENT**.
- 7) ENTER TEMPERATURE.
 - a) TURN **LIST** CW TO REACH TEMP DISPLAY.
 - b) PRESS **SEL**.
 - c) TURN **DATA** TO SIGN +/-.
 - d) PRESS **ENT**.
 - e) TURN **DATA** TO DISPLAY YOUR TEMP.
 - d) PRESS **ENT**.
- 8) TURN **LIST** CW TO DISPLAY TRUE AIRSPEED.

DENSITY ALTITUDE

- 1) PRESS **MODE** TO REACH SETUP MODE.
- 2) TURN **LIST** TO DISPLAY E-6B FEATURE.
- 3) PRESS **ENT** TO REACH E-6B FEATURES.
- 4) TURN **LIST** TO REACH DENSITY ALTITUDE.
- 5) PRESS **ENT**.
- 6) ENTER PRESSURE ALTITUDE (PALT).
 - a) PRESS **SEL**
 - b) TURN **DATA** TO DISPLAY YOUR PALT.
 - c) PRESS **ENT**.

7) ENTER TEMPERATURE.

- a) TURN **LIST** CW TO REACH TEMP DISPLAY.
- b) PRESS **SEL**.
- c) TURN **DATA** TO SIGN +/-.
- d) PRESS **ENT**.
- e) TURN **DATA** TO DISPLAY YOUR TEMP.
- d) PRESS **ENT**.

8) TURN LIST CW TO DISPLAY DENSITY ALT.

WINDS ALOFT

- 1) PRESS **MODE** TO REACH SETUP MODE.
- 2) TURN **LIST** TO DISPLAY E-6B FEATURE.
- 3) PRESS **ENT** TO REACH E-6B FEATURES.
- 4) TURN **LIST** TO REACH "COMPUTE WIND?".
- 5) PRESS **ENT**.
- 5) TURN **LIST** TO (IAS).
 - a) PRESS **SEL**
 - b) TURN **DATA** TO DISPLAY IAS.
 - c) PRESS **ENT**.
- 6) ENTER PRESSURE ALTITUDE (PALT).
 - a) TURN **LIST** CW TO REACH PALT DISPLAY
 - b) PRESS **SEL**.
 - c) TURN **DATA** TO DISPLAY YOUR PALT.
 - d) PRESS **ENT**.

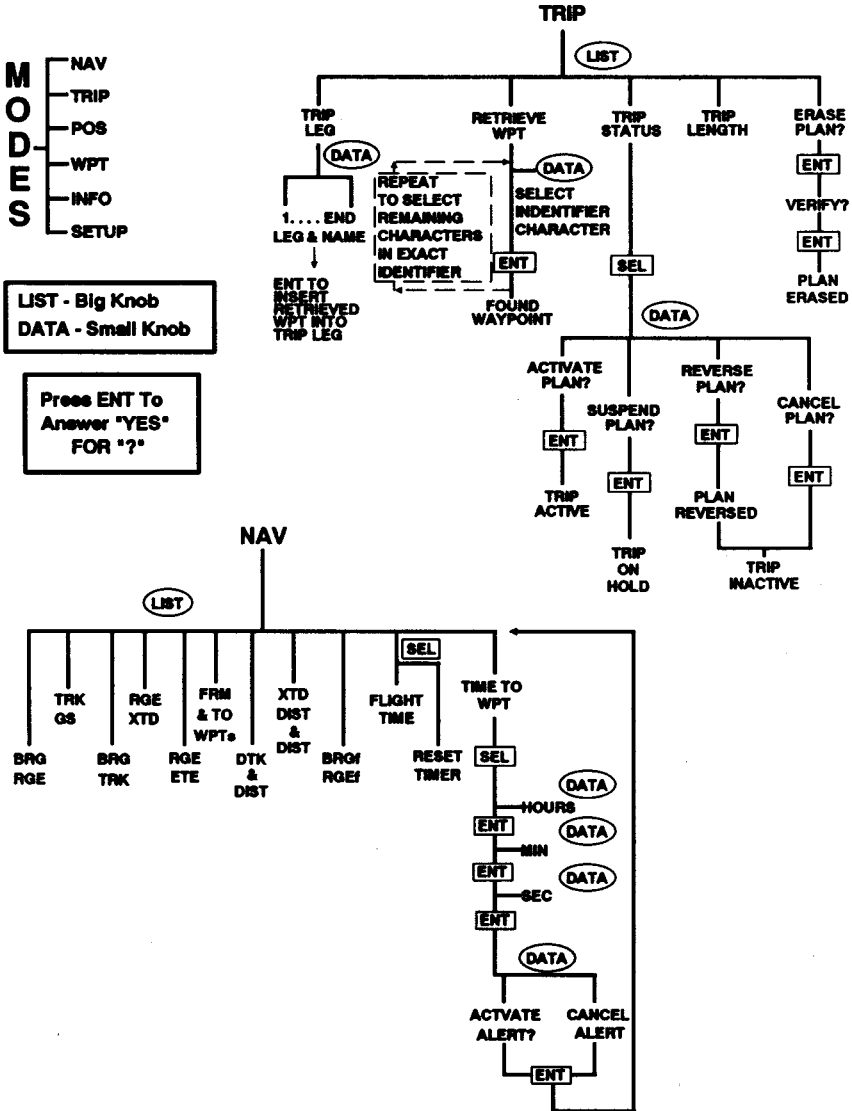
7) ENTER TEMPERATURE.

- a) TURN **LIST** CW TO REACH TEMP DISPLAY.
- b) PRESS **SEL**.
- c) TURN **DATA** TO SIGN +/-.
- d) PRESS **ENT**.
- e) TURN **DATA** TO DISPLAY YOUR TEMP.
- d) PRESS **ENT**.

USE THE DEL BUTTON TO BACKSTEP TO THE PREVIOUS DISPLAY

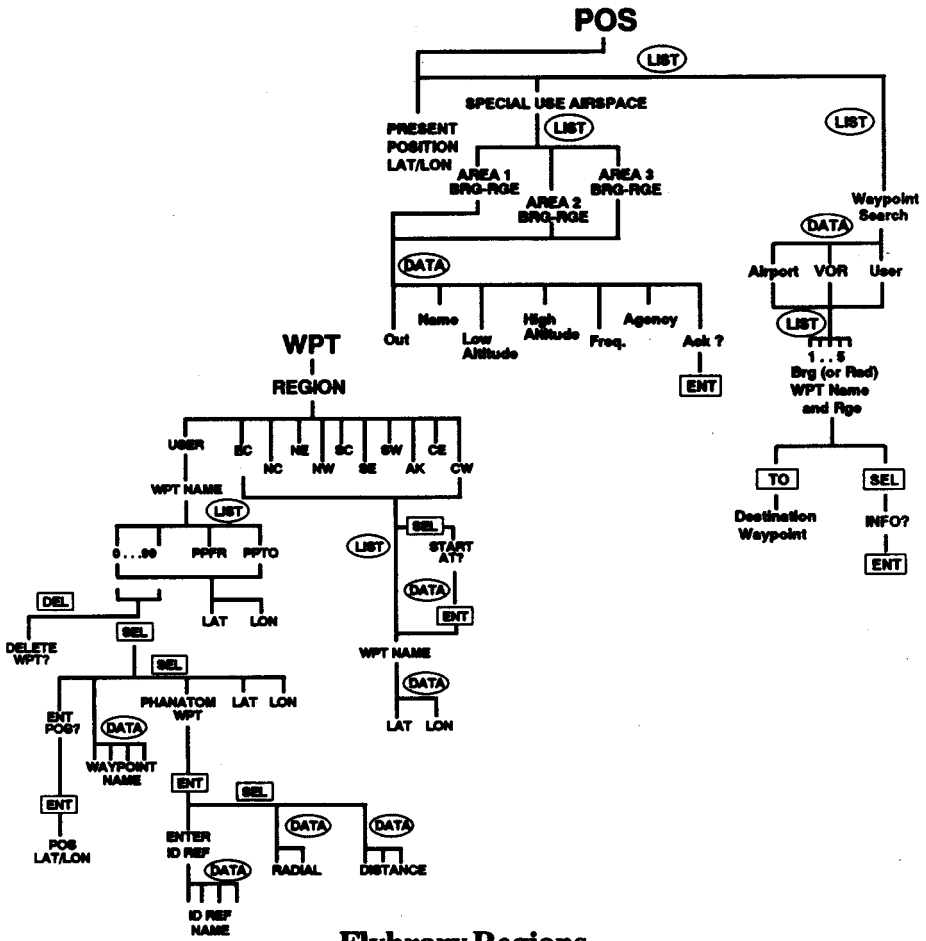
Operational Flow Chart For The Apollo® 604

II Morrow Inc.

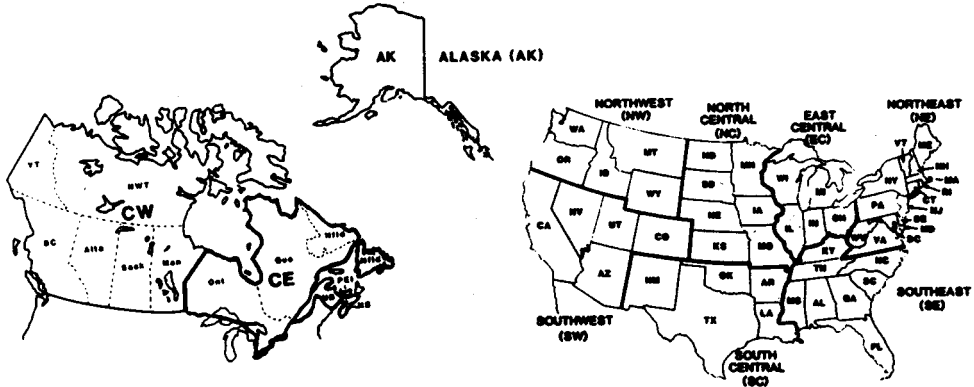


LIST - Big Knob
DATA - Small Knob

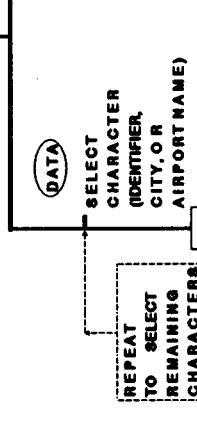
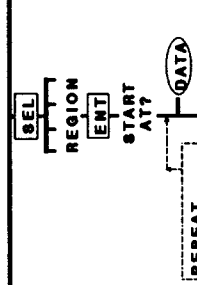
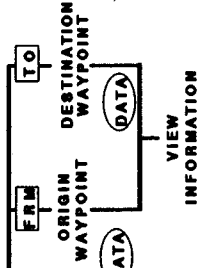
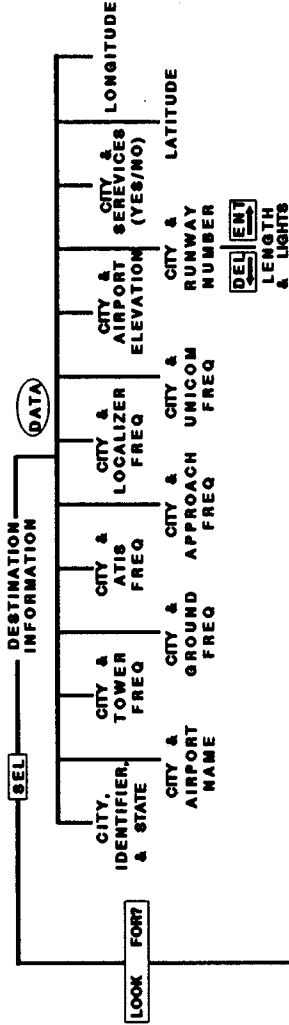
Press ENT To Answer "YES" FOR "?"



Flybrary Regions



INFO



SETUP SUMMARY

